



Lorain County Metro Parks

2012 Annual Report to the Citizens of Lorain County



12882 Diagonal Road | LaGrange, Ohio 44050

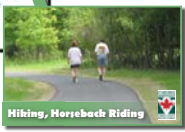
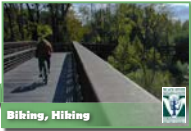
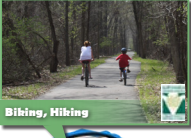
Phone: 1-800-LCM-PARK | TDD & Voice: (440) 458-5121

Fax: (440) 458-8924

www.MetroParks.cc



Lorain County Metro Parks Activities



Lorain County Metro Parks
12882 Diagonal Road
LaGrange, Ohio 44050
440.656.5122
Created 09-16-2016



THE LORAIN COUNTY METROPOLITAN PARK DISTRICT

was established in 1957 by the Lorain County Probate Court. Under the provisions of Chapter 1545 of the Ohio Revised Code, Lorain County Metro Parks is a special district operating as a separate political subdivision of the State of Ohio. The Metro Parks provide residents with the preservation of open space, conservation, education and outdoor recreation programs and facilities.

Funding for the Metro Parks is provided primarily by a 1.3 mill countywide property tax levy. Other sources of income include grants, gifts and bequests along with fees generated from the Forest Hills Golf Course, Splash Zone, Miller Nature Preserve and facility rentals.

Lorain County Metro Parks is governed by a three-member Board of Park Commissioners, who are appointed by the Lorain County Probate Court Judge and serve without pay.

LORAIN COUNTY METRO PARKS BOARD OF PARK COMMISSIONERS



FREDERICK L. ALSPACH



ROBERT M. CAMPANA



SHERRILL M. McLODA

The Board of Park Commissioners is responsible for policy and decision making. The Director/Secretary is responsible for the daily management of the Metro Parks. The Lorain County Metro Parks staff is comprised of 57 full-time and 10 year-round, part-time employees, supplemented by up to 160 seasonal staff members in the summer months. Fourteen members of the Metro Parks' ranger staff are certified Ohio Peace Officers. The rangers are responsible for public safety in the Metro Parks and are also assigned park maintenance and supervisory duties. Other staff members maintain ties and conduct educational programming and special event activities in the park district.

*DIRECTOR/
SECRETARY*



JAMES E. ZIEMNIK

*PROBATE COURT
JUDGE*



JAMES T. WALTHER

Volunteer Support is an essential element to the success of the Metro Parks. Over the past year, volunteers donated over 25,000 hours of their time to the Metro Parks. Friends of Metro Parks in Lorain County Inc. now totals over 450 members.



Friends of the Metro Parks served up hundreds of pancakes as part of the annual Pancake Breakfast fundraiser that benefits the Citizens Committee for Lorain County Metro Parks. Over the course of three weeks, dozens of volunteers cooked and served more than 400 guests.

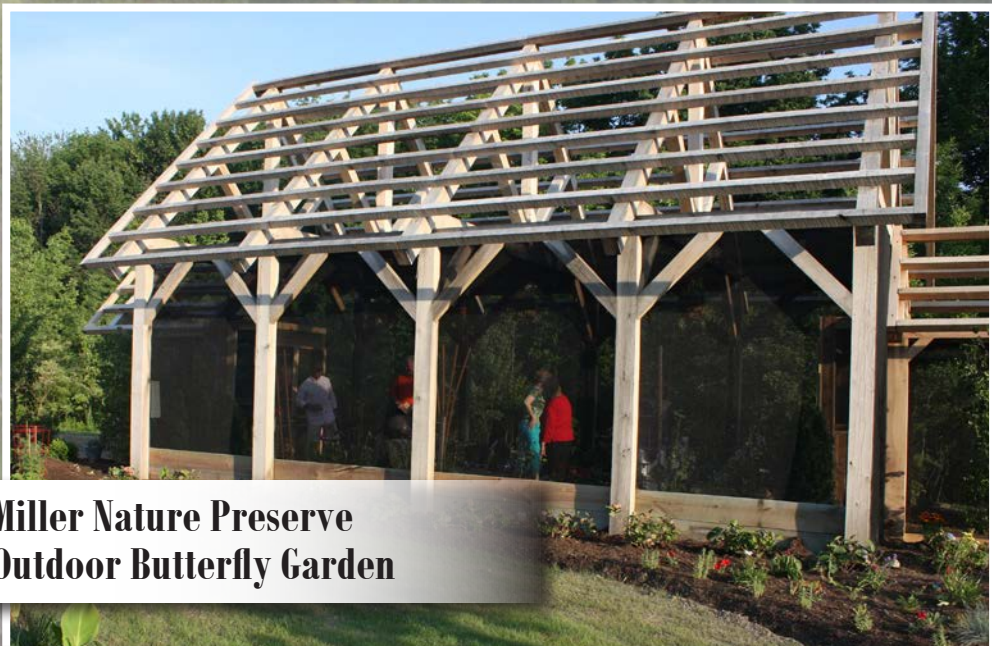
Halloween Fair did not disappoint this year with new attractions such as the zombiettes and the massive vampire bat. The event drew more than 15,000 people this year. Friends of the Metro Parks are an integral part of Halloween Fair's success volunteering to run concessions, games and more! Collectively hundreds of hours were donated to ensure the event went off without a hitch!



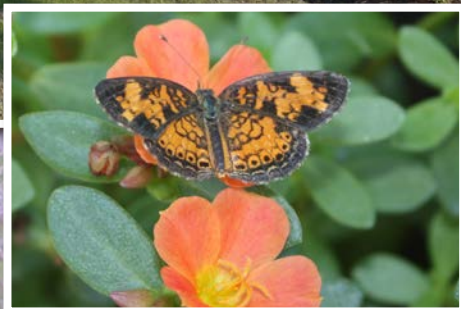
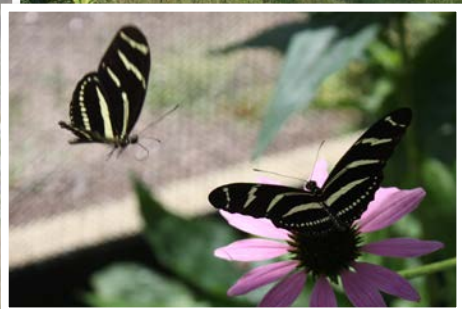
The Holiday Lights tradition continued this year with its Movie-Themed displays. Nearly 16,500 people walked the trail to see the festive lights. Throughout the holiday season, hundreds of Friends of the Metro Parks volunteered to make the event safe and successful.



LORAIN COUNTY METRO PARKS DISTRICT 2012 ACCOMPLISHMENTS

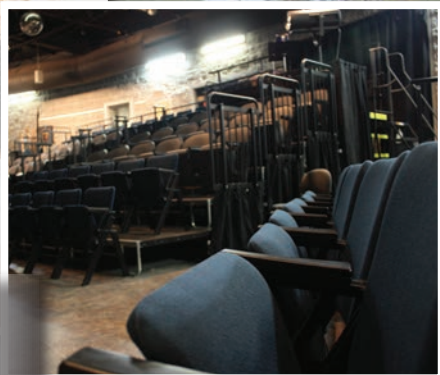


**Miller Nature Preserve
Outdoor Butterfly Garden**



The Butterfly Garden at Miller Nature Preserve officially opened in July 2012. This rare attraction sits among several other “themed” spaces including an herb, vegetable, lily, & rose gardens. The butterfly garden is open seasonally from July 1-Labor Day from 10 a.m. to 5:30 p.m. daily. Visitors experience a variety of species of butterflies up close as they flutter around their favorite types of plants and a stunning water feature.

The garden is manned by volunteers from Friends of the Metro Parks.



New Theatre Seating at French Creek Nature & Arts Center

Lorain County Metro Parks added theatre seating to its growing French Creek Nature & Arts Center. The 2012-2013 theatre schedule was jam-packed with music and drama drawing crowds from inside and outside of Lorain County. The new 160-seat theatre and ticketing systems allows theatre-goers to choose their seat. These new amenities give French Creek guests an incredible experience!



Outdoor Garden Dedication at Miller Nature Preserve

In June, Lorain County Metro Parks dedicated the outdoor gardens at Miller Nature Preserve to Rebecca Voit in honor of her 34 years of service with the park district. Becky started with the metro parks as a naturalist and worked her way up to becoming the public information officer and retired in 2010 as the assistant director.



Otto Schoepfle Statue Dedication at Schoepfle Gardens

In October, friends, family and colleagues of Otto B. Schoepfle gathered to honor his legacy with a life-size bronze statue of the man himself. Schoepfle's forward-thinking philanthropy has created what is today known as Lorain County Metro Park's Schoepfle Garden. The statue, complete with his signature bowtie, is situated behind his home and in one of his favorite parts of the garden.



Mobi-Chair at Lakeview Park

This summer, Lorain County Metro Parks took beach accessibility to a new level with the investment in a Mobi-Chair. The Mobi-Chair, described as the wheelchair that floats, allows persons with disabilities to enjoy the beach and water without ruining expensive wheelchair devices. The Mobi-Chairs rolls through the sandy beach with ease and into the lake and floats upon entry to the water. Visitors can use the device free of charge.



Construction of Mercy Health & Recreation Center



Throughout 2012, Mercy Health & Recreation Center in Amherst was constructed. Built by local design-build company Star, Inc., this 50,000 square foot recreation center features an 8-lane swimming pool, 3-lane walking track and fitness area, locker rooms, and a variety of meeting and aerobic spaces. Through a collaborative partnership with Mercy, this facility is a one-stop-shop for wellness in Lorain County. This project would not have been possible without the generous land donations from the Hollstein and Campana families.

Park District User Survey

During the next six months, staff and volunteers will be conducting a series of public workshops and collecting user surveys. We hope to hear from thousands of park visitors as we prepare a new 10 year plan to carry the District into the next decade. We want to hear from you. Please let the District know what services and facilities you currently enjoy as well as new opportunities you feel we should explore in the future. Thank you for your time and continued support.

Please complete the following questionnaire as completely as possible.

1. How often did you visit the Lorain County Metro Parks last year?

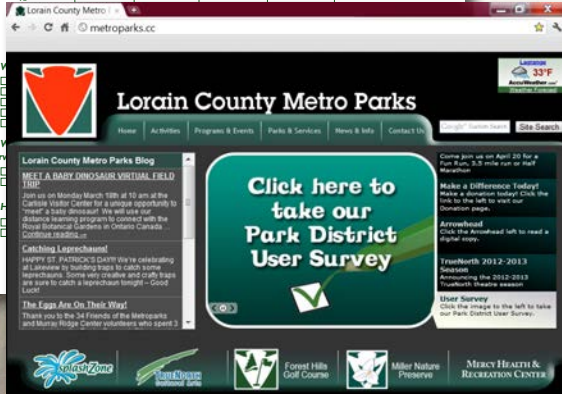
- More than once a week
 Weekly
 Monthly
 Occasional
 Not at all

2. What activities do you currently enjoy in the Metro Parks?

- Hiking
 Walking
 Bicycling
 Canoeing
 Theatre presentations
 Natural history programs
 Historical programs
 Playgrounds
 Fishing
 Swimming
 Fitness facilities
 Golf
 Horticulture (gardens/ greenhouses)
 Restaurants
 Bird watching
 Special events (Halloween Fair, Music Under the Stars, etc.)
 Other, please specify _____

3. Please rank the following services:

	Excellent	Good	Average	Poor
Park Safety				
Bikeways				
Nature Programs				
Cultural programs				
Cleanliness				
Playgrounds				



New Park District User Survey

The park district rolled out its Park User Survey in early 2012. The survey is used to gauge public perception of the parks. It is distributed during major events, park programs, through the e-newsletter and is also available online at www.MetroParks.cc. As part of the survey process, metro parks staff also held public meetings in each community to learn more about the needs of each individual community. The results of the surveys and public open houses will be used to develop the next 10-year-plan.

Sunset Trail at Kopf Family Reservation

Spring of 2012 brought the completion of the quarter mile, three phased Sunset Trail connecting the Armour Trail and the city owned Sunset Park in the Kopf Family Reservation in Avon Lake.

The final grading and paving of the 10 foot wide Sunset Trail was completed in May of 2012. This trail provides immediate access to the trail system in the Kopf Family Reservation to yet another neighborhood.

Also in 2012, was the completion of the graveled Gable Creek Trail connecting the Armour Trail at the south end near Belle Rd park to the Redwood Street access, the Sunset Trail and on up to Electric Blvd. on the northern boundary of the park. This 1.05 mile scenic trail follows the course of Gable Creek through the reservation.



Planning of the Inclusive Playground

Throughout 2012, planning for the Inclusive Playground at Hollstein Reservation continued. Lorain County Metro Parks formed an advisory group of Murray Ridge parents who have children and adults with disabilities. Through a series of meetings, the advisory group collaborated and recommended equipment and play features for the playground. The finished product, slated to open summer of 2013, will include 18 water, structure and nature play areas.



INCLUSIVE PLAYGROUND
AT HOLLSTEIN RESERVATION

RECREATION AND HEALTH CENTER



Music Under the Stars at Lakeview Park

The 2012 Music Under the Stars Concert Series was filled with rock, theatre, swing and culture! The season kicked off with a celebration of Juneteenth featuring a local gospel choir, music from The Lion King and more. The season continued with the sounds of Sophisticated Swing and the local youth talent in excerpts from TrueNorth Cultural Arts theatre camp. The final performance rocked out with the John Hardy Band.





Performances at TrueNorth Cultural Arts

Lorain County Metro Parks' art offerings continue to evolve giving guests an exceptional experience every visit! The theatre season included notable shows such as *Miracle Worker*, *Annie Get Your Gun* and sell-out performances for *13*, and *The Sound of Music*. The theatre has attracted and showcased some of Lorain County's greatest talent. In 2012, French Creek Nature & Arts Center featured several art galleries featuring work from local artists.



Road to Freedom: An Interactive Underground Railroad Experience

This interactive experience marked its 4th year. Road To Freedom gives kids and adults the opportunity to walk the Underground Railroad in Sheffield. More than 1500 students from Lorain County and surrounding communities learned what it took to survive in the Underground Railroad as they file the role of an escaped slave. The program also features the Burrell Homestead and the family that helped lead slaves to freedom.

LORAIN COUNTY METRO PARKS PROGRAMS

In 2012, the Lorain County Metro Parks' naturalist staff conducted 512 requested programs (those programs requested by outside groups) and 1,518 public programs (those listed in the ARROWHEAD, the District's newsletter) with over 90,000 people in attendance.

METRO PARKS FACILITY USE ROOM AND PROGRAMS

	Reservations	Attendance
Amherst Beaver Creek	490	18,629
Black River Reservation	288	17,056
Carlisle Visitor Center	693	29,122
Charlemont	9	370
Columbia Reservation	41	1,062
French Creek Nature Center	111	5,033
Indian Hollow	72	4,107
Kopf Reservation	2	200
Lakeview Park	325	29,026
Miller Nature Preserve	27	597
North Coast Inland Trail	4	515
Sandy Ridge Reservation	189	6,812
Schoepfle Garden	139	3,019
Splash Zone	506	12,032
Bus Trips	104	1,819
Vermilion River Reservation	505	27,765
Wellington Reservation	244	9,388



2012 PROGRAMS

Requested	512	20,646
Public	1,518	18,719
HOLIDAY LIGHTS		16,441
HALLOWEEN FAIR		15,045

FINANCIAL SUMMARY

AS OF DECEMBER 31, 2012

REVENUE

Property Tax.....	\$8,084,689
Interest on Investments.....	\$9,507
Schoepfle Trust.....	\$636,740
Forest Hills Golf Course.....	\$339,582
Grants.....	\$7,054
Fees and Charges.....	\$961,721
Splash Zone.....	\$743,720
TOTAL REVENUE.....	\$10,783,013

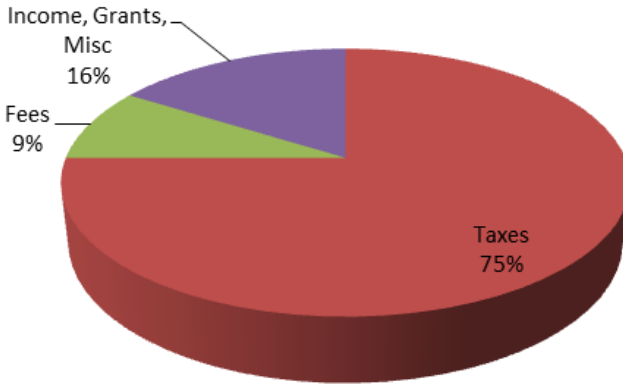
EXPENDITURES

Salaries.....	\$3,243,146
Employee Fringe Benefits.....	\$1,080,336
Supplies.....	\$67,426
Programs.....	\$95,487
Materials.....	\$476,978
Repairs/Rentals.....	\$56,819
Utilities/Service.....	\$938,457
Advertising/Displays/Printing.....	\$157,599
Projects.....	\$78,451
Seminars/Training.....	\$12,875
Designated Donations.....	\$394,387
Equipment.....	\$250,000
Land Acquisition.....	\$29,562
Capital Improvements/Contracts.....	\$6,725,163
Grants/Misc.....	\$244,749
TOTAL EXPENDITURES.....	\$13,851,435

ABOUT THIS PUBLICATION

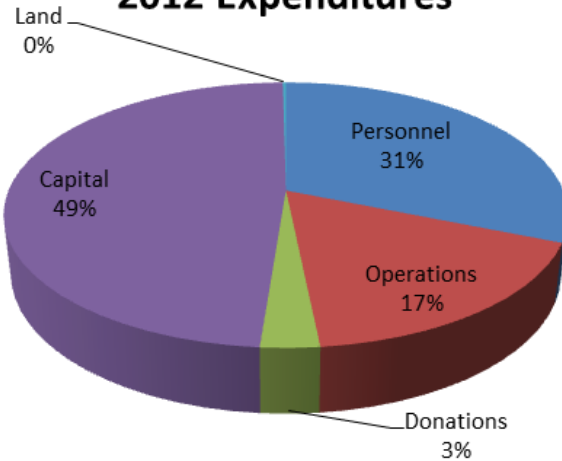
Ohio Revised Code Section 1545.08 requires that park districts periodically publish a report to the citizens summarizing the district's activities. This report is intended to fulfill this requirement. Other reports regarding specific programs or facilities are available annually. If you have any questions concerning this publication, please contact Lorain County Metro Parks at (440) 458-5121. Unless otherwise noted, numbers in this report were accurate as of January 1, 2013.

2012 Revenue



Taxes	8,084,689	75%
Fees	961,721	9%
Income, Grants, Misc	1,736,603	16%
10,783,013		

2012 Expenditures



Personnel	4,323,482	31%
Operations	2,378,841	17%
Donations	394,387	3%
Capital	6,725,163	49%
Land	29,562	>1%

13,851,435



LORAIN
COUNTY
METRO
PARKS