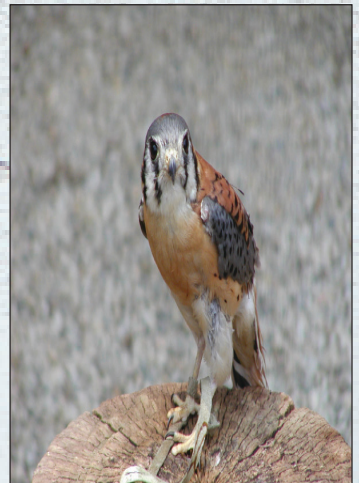
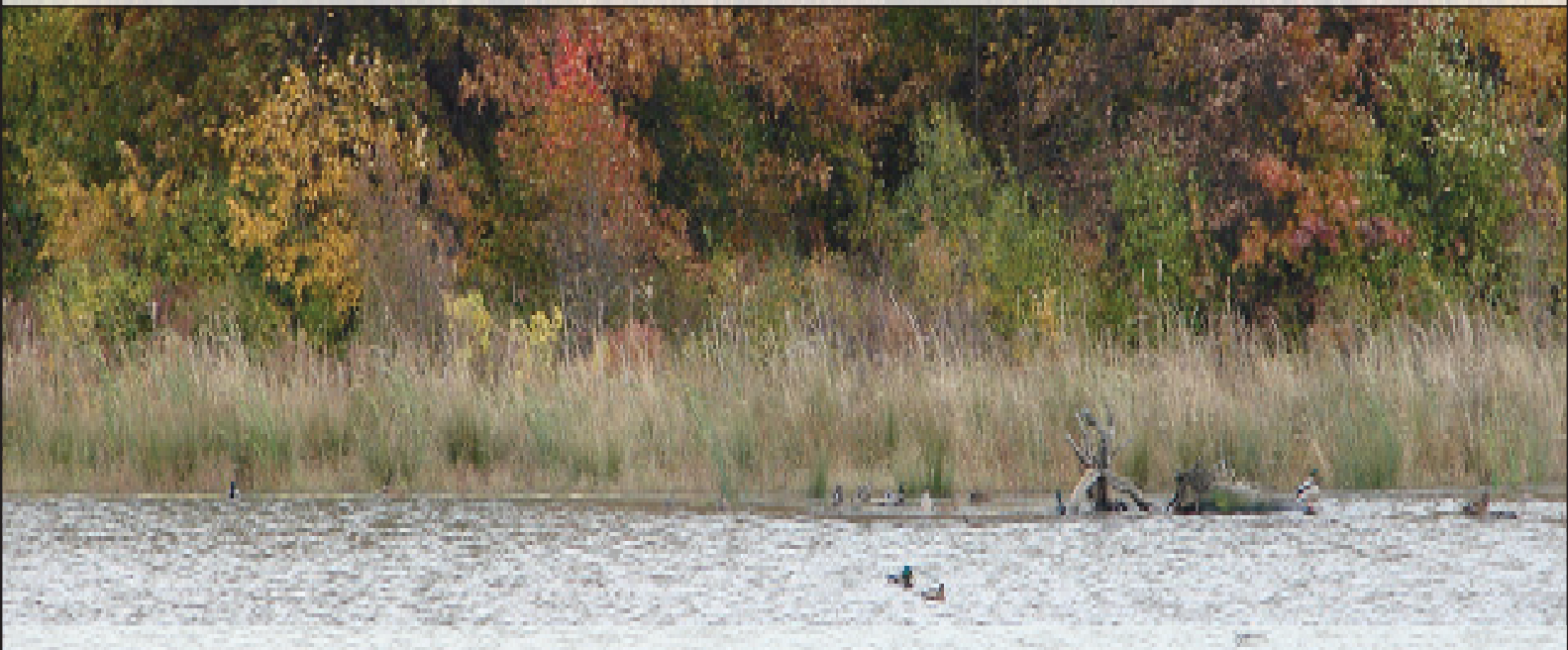


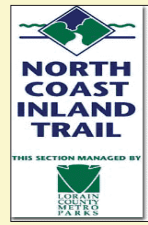


# Lorain County Metro Parks

**2011 Annual Report to  
the Citizens of Lorain County**



# Your Lorain County Metro Parks







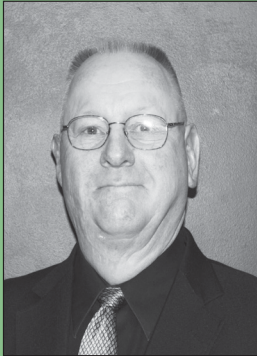
## **The Lorain County Metropolitan Park**

**District** was established in 1957 by the Lorain County Probate Court. Under the provisions of Chapter 1545 of the Ohio Revised Code, Lorain County Metro Parks is a special district operating as a separate political subdivision of the State of Ohio. The Metro Parks provide residents with the preservation of open space, conservation, education and outdoor recreation programs and facilities.

Funding for the Metro Parks is provided primarily by a 1.3 mill countywide property tax levy. Other sources of income include grants, gifts and bequests along with fees generated from the Forest Hills Golf Course, Splash Zone, Miller Nature Preserve and facility rentals.

Lorain County Metro Parks is governed by a three-member **Board of Park Commissioners**, who are appointed by the Lorain County Probate Court Judge and serve without pay.

## LORAIN COUNTY BOARD OF COMMISSIONERS



**Frederick L. Alspach**



**Robert M. Campana**



**Sherrill M. McLoda**

The Board of Park Commissioners is responsible for policy and decision making. The Director/Secretary is responsible for the daily management of the Metro Parks. The Lorain County Metro Parks staff is comprised of 57 full-time and 10 year-round, part-time employees, supplemented by up to 160 seasonal staff members in the summer months. Fourteen members of the Metro Parks' ranger staff are certified Ohio Peace Officers. The rangers are responsible for public safety in the Metro Parks and are also assigned park maintenance and supervisory duties. Other staff members maintain ties and conduct educational programming and special event activities in the park district.

### DIRECTOR SECRETARY



**James D. Martin**

### PROBATE COURT JUDGE



**James T. Walther**



**Volunteer Support** is an essential element to the success of the Metro Parks. Over the past year, volunteers donated over 25,000 hours of their time to the Metro Parks. Friends of Metro Parks in Lorain County Inc. now totals over 450 members.





## Lorain County Metro Parks District 2011 Accomplishments



**Miller Nature Preserve and Conservatory** in Avon opened on May 7, 2011. It featured the first conservatory in Lorain County with 5,000 square feet of seven unique and exotic plant collections including Dr. Ibrahim Eren’s orchid collection, the Orchid Room Cafe open for lunch and dinner, a demonstration kitchen for culinary classes and a gift shop operated by the Friends of the Metro Parks in Lorain County. Miller Nature Preserve was made possible through the generous donation of land from Raymond “Buddy” Miller and monetary donations from organizations around Lorain County

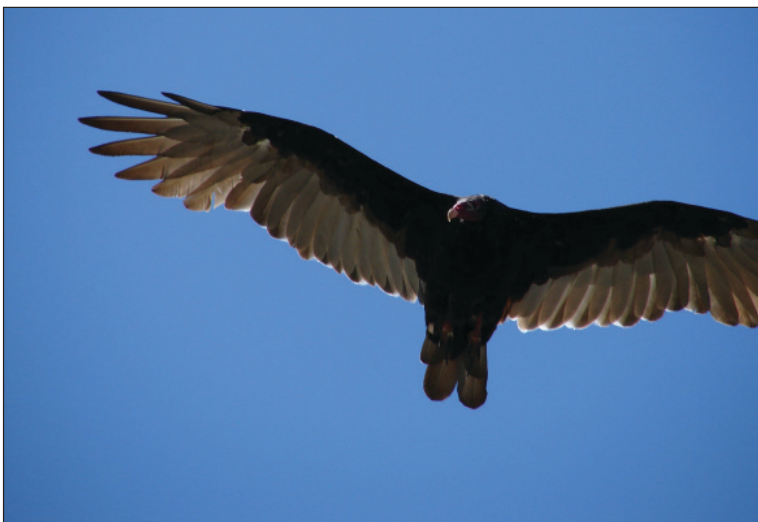


**School Matinees** were offered to local schools at a discounted price as a way to expose their students to the arts and history. Through the partnership with TrueNorth Cultural Arts, matinees were offered for performances of *A Raisin in the Sun* in February and *Anne Frank* in October.



**Burrell Christmas** was celebrated with the “Burrell Family” on December 17, 2011 as guests were transported back to the Victorian era and assisted the family in trimming the tree, a new tradition for them. Guests also learned how some of today’s holiday traditions took shape.

**Kayaking Symposium** Through a partnership with the Backpacker’s Shop of Sheffield Village, LCMP offered opportunities for park visitors to tryout a kayak on Lake Erie at the Kayak Symposium. Over 1,000 people participated in several kayak and canoe related activities.



**BioBlitz** On June 10 and 11th, the Naturalist department facilitated the first BioBlitz of a metro parks by blitzing Sandy Ridge Reservation with experts, volunteers, and staff in an effort to catalog, inventory, document and collect various specimens of flora and fauna within the park. The Naturalist Department also facilitated programs for the general public to learn and participate in the BioBlitz.





**Amherst Wellness Zone** was announced on September 8, 2011. Through the generous donations of the Hollstein and Campana families, and other partnerships with several local governments and organizations, a recreation and health center will be located in Amherst. Organizations who have stepped forward to be part of this exciting project are the City of Amherst, Lorain County Community College, Lorain County Board of Developmental Disability, Lorain County Board of Mental Health, United Way of Greater Lorain County and Mercy Foundation of Lorain County. The center is anticipated to open in January of 2013.

**Nature Discovery Days** is a program geared towards Kindergarten to 2nd graders to help them explore and learn more about nature. Taking place at the French Creek Nature Center, students hike the trails and participate in activities about the natural world around them.



**Restrooms** were built at Black River Reservations' Days Dam and High Meadows Picnic Areas. The older pit toilets were replaced with flush toilets to the joy of many hikers.

**Holiday Lights** celebrated its 10th anniversary in 2011. To celebrate, the trail was decorated in a classic holiday movie theme with scenes from *How the Grinch Stole Christmas*, *The Nutcracker*, and more. Over 15,000 people attended Holiday Lights and over 6,000 pounds of food was donated to Second Harvest Food Bank.





# Lorain County Metro Parks Programs

In 2011, the Lorain County Metro Parks' naturalist staff conducted 506 requested programs (those programs requested by outside groups) and 1,275 public programs (those listed in the *ARROWHEAD*, the District's newsletter) with over 90,000 people in attendance.

## Metro Parks Facility Use

### Room and Programs

Requested Programs (506).....	21,626
Public Programs (1,275).....	50,952
Senior Citizen Bus Tours (109).....	2,124
Halloween Fair/Holiday Lights.....	33,073
Amherst Beaver Creek (530).....	17,838
Carlisle Visitor Center (519).....	30,564
Carriage Barn (222).....	9,009
Forest Hills.....	19,295
Miller Nature Preserve.....	15,128
TrueNorth Cultural Arts	
Concerts.....	631
Theatre.....	5,812
Family Life Series.....	1,553
Johnson Wetland Center (169).....	5,728
Schoepfle Garden (35) .....	889
<b>Total.....</b>	<b>214,222</b>

## Metro Parks Day-Use Visitors

Amherst.....	125,000
Black River.....	252,801
Caley.....	5,849
Carlisle.....	179,014
Columbia.....	59,689
French Creek.....	178,642
Indian Hollow.....	53,227
Miller Nature Preserve.....	32,282
North Coast Inland Trail.....	110,000
Sandy Ridge.....	50,630
Lakeview.....	900,000
Schoepfle Garden.....	57,467
Splash Zone.....	400,000
Vermilion.....	140,353
Wellington.....	44,391
<b>Total.....</b>	<b>2,591,345</b>

**(Facility and day-use visitors).**



# Financial Summary as of December 31, 2011

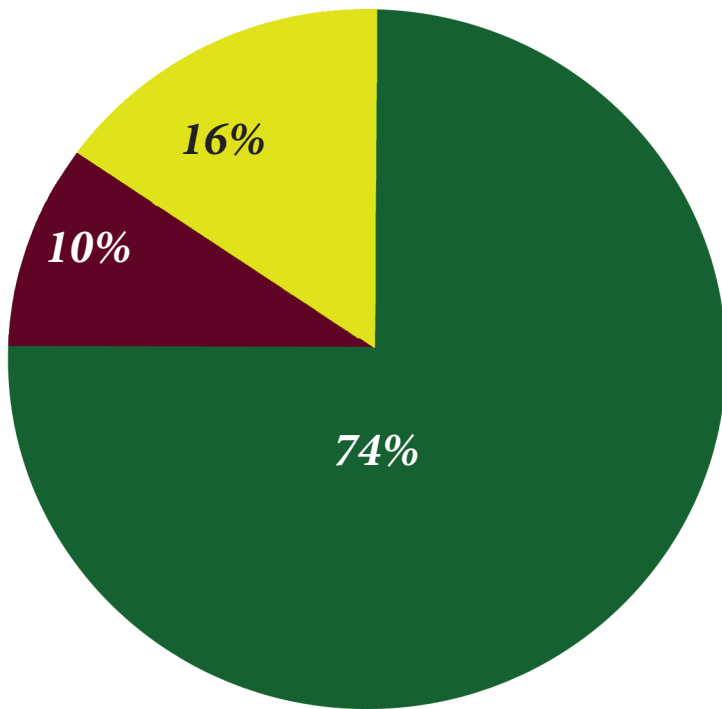
## REVENUE

Property Tax.....	\$8,283,609
Interest on Investments.....	66,799
Schoepfle Trust.....	149,358
Forest Hills Golf Course.....	299,493
Grants.....	545,358
Fees and Charges.....	1,050,517
Splash Zone.....	749,025
<b>Total Revenue.....</b>	<b>11,144,159</b>

## EXPENDITURES

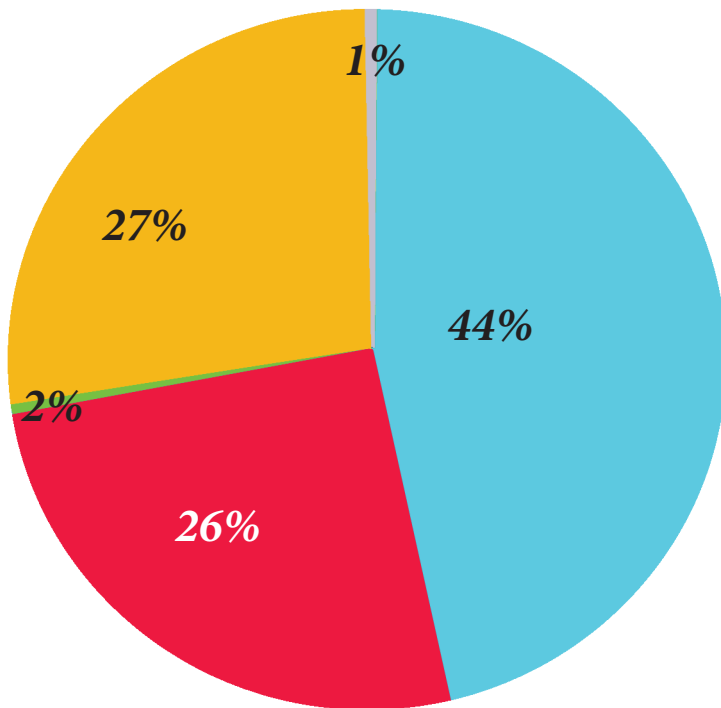
Salaries.....	\$3,264,789
Employee Fringe Benefits.....	1,122,148
Supplies.....	62,919
Programs.....	86,622
Materials.....	401,025
Repairs/Rentals.....	43,989
Utilities/Service.....	704,234
Advertising/Displays/Printing.....	152,614
Projects.....	79,874
Seminars/Training.....	12,126
Designated Donations.....	216,570
Equipment.....	250,000
Land Acquisition.....	87,673
Capital Improvements/Contracts.....	2,662,514
Grants/miscellaneous.....	833,393
<b>Total Expenditures.....</b>	<b>9,980,490</b>





**2011 REVENUE**

Taxes .....	\$8,283,609.....	74%
Fees.....	\$1,050,517.....	10%
Income, Grants, Misc....	\$1,810,033.....	16%
<b>TOTAL.....</b>	<b>\$11,144,159.....</b>	<b>100%</b>

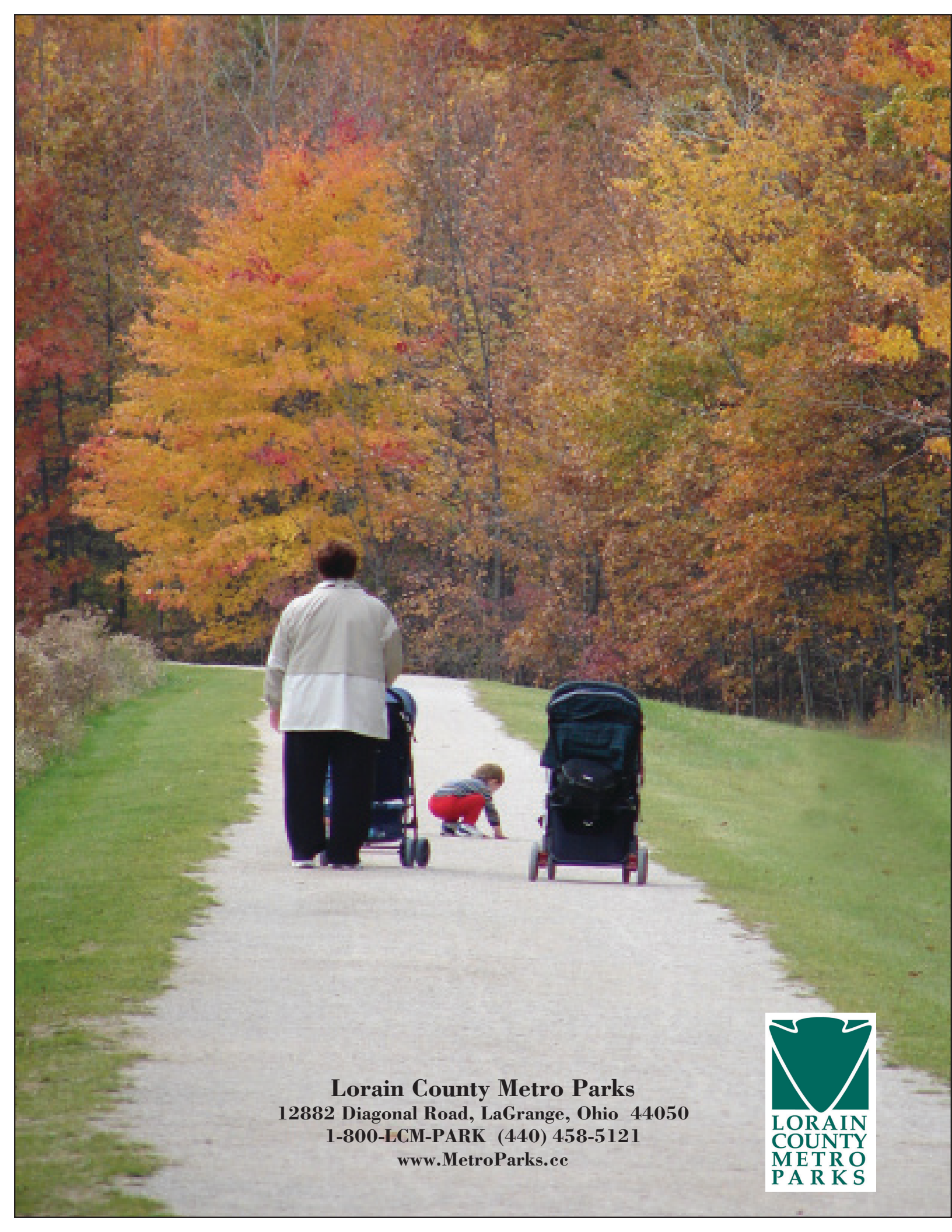


**2011 EXPENDITURES**

Personnel.....	\$4,386,937.....	44%
Operations.....	\$2,626,796.....	26%
Donations.....	\$216,570.....	2%
Capital.....	\$2,662,514.....	27%
Land.....	\$87,673.....	1%
<b>TOTAL.....</b>	<b>\$9,980,490.....</b>	<b>100%</b>

**ABOUT THIS PUBLICATION**

*Ohio Revised Code Section 1545.08 requires that park districts periodically publish a report to the citizens summarizing the district's activities. This report is intended to fulfill this requirement. Other reports regarding specific programs or facilities are available annually. If you have any questions concerning this publication, please contact Lorain County Metro Parks at (440) 458-5121. Unless otherwise noted, numbers in this report were accurate as of January 1, 2012.*



**Lorain County Metro Parks**  
12882 Diagonal Road, LaGrange, Ohio 44050  
1-800-LCM-PARK (440) 458-5121  
[www.MetroParks.cc](http://www.MetroParks.cc)

